

REC TWINPEAK SERIES

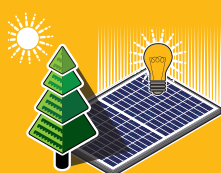
PREMIUM SOLAR PANELS WITH SUPERIOR PERFORMANCE

REC TwinPeak Series solar panels feature an innovative design with high panel efficiency and power output, enabling customers to get the most out of the space used for the installation.

Combined with industry-leading product quality and the reliability of a strong and established European brand, REC TwinPeak panels are ideal for residential and commercial rooftops worldwide.



**MORE POWER
OUTPUT PER M²**



**IMPROVED PERFORMANCE
IN SHADED CONDITIONS**

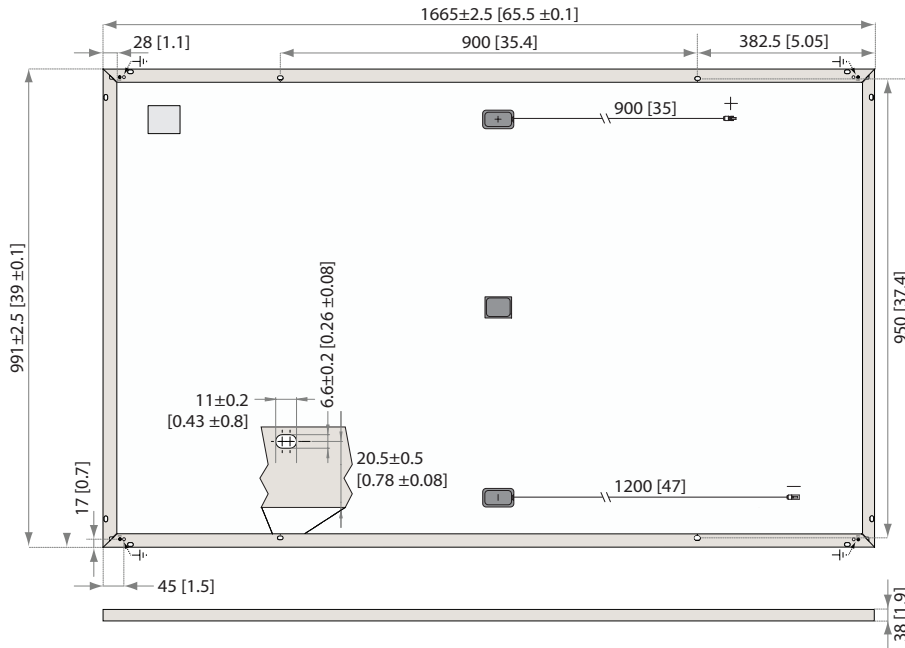


**100%
PID FREE**



**REDUCES BALANCE OF
SYSTEM COSTS**

REC TWINPEAK SERIES



Measurements in mm [in]

17.3% EFFICIENCY

10 YEAR PRODUCT WARRANTY

25 YEAR LINEAR POWER OUTPUT WARRANTY

GENERAL DATA

Cell type:	120 half-cut multicrystalline PERC cells 6 strings of 20 cells in series
Glass:	3.2 mm solar glass with anti-reflection surface treatment
Backsheet:	Highly resistant polyester
Frame:	Anodized aluminum (silver / black)
Junction box:	3-part, 3 bypass diodes, IP67 rated in accordance with IEC 62790
Cable:	4 mm ² solar cable, 0.9 m + 1.2 m in accordance with EN 50618
Connectors:	Stäubli MC4 PV-KBT4/PV-KST4 (4 mm ²) Tonglin TL-Cable01 (4 mm ²) in accordance with IEC 62852, IP67 only when connected
Origin:	Made in Singapore

ELECTRICAL DATA @ STC

Product code*: RECxxxTP

Nominal Power - P_{MPP} (Wp)	265	270	275	280	285
Watt Class Sorting - (W)	-0/+5	-0/+5	-0/+5	-0/+5	-0/+5
Nominal Power Voltage - V_{MPP} (V)	31.1	31.2	31.4	31.9	32.1
Nominal Power Current - I_{MPP} (A)	8.53	8.66	8.76	8.78	8.90
Open Circuit Voltage - V_{OC} (V)	38.3	38.6	38.8	39.2	39.5
Short Circuit Current - I_{SC} (A)	9.21	9.29	9.40	9.44	9.54
Panel Efficiency (%)	16.1	16.4	16.7	17.0	17.3

Values at standard test conditions (STC: air mass AM1.5, irradiance 1000 W/m², temperature 25°C), based on a production spread with a tolerance of V_{OC} & I_{SC} $\pm 3\%$ within one watt class. At low irradiance of 200 W/m² at least 95% of the STC module efficiency will be achieved.
*Where xxx indicates the nominal power class (P_{MPP}) at STC indicated above, and can be followed by the suffix BLK for black framed modules.

ELECTRICAL DATA @ NMOT

Product code*: RECxxxTP

Nominal Power - P_{MPP} (Wp)	195	198	202	205	209
Nominal Power Voltage - V_{MPP} (V)	28.8	28.9	29.0	29.5	29.6
Nominal Power Current - I_{MPP} (A)	6.77	6.87	6.95	6.97	7.06
Open Circuit Voltage - V_{OC} (V)	35.2	35.5	35.7	36.1	36.3
Short Circuit Current - I_{SC} (A)	7.32	7.38	7.47	7.50	7.58

Nominal module operating temperature (NMOT: air mass AM1.5, irradiance 800 W/m², temperature 20°C, windspeed 1 m/s).

*Where xxx indicates the nominal power class (P_{MPP}) at STC indicated above, and can be followed by the suffix BLK for black framed modules.

CERTIFICATIONS



IEC 61215, IEC 61730 & UL 1703; MCS 005, IEC 62804 (PID)
IEC 62716 (Ammonia Resistance), IEC 60068-2-68 (Blowing Sand)
IEC 61701 (Salt Mist level 6), UNI 8457/9174 (Class A), ISO 11925-2 (Class E)
ISO 9001:2015, ISO 14001:2004, OHSAS 18001:2007

takeaway take-e-way WEEE-compliant recycling scheme

WARRANTY

10 year product warranty
25 year linear power output warranty
(max. degradation in performance of 0.7% p.a.)
See warranty conditions for further details.

MAXIMUM RATINGS

Operational temperature:	-40 ... +85°C
Maximum system voltage:	1000 V
Design load (+): snow	367 kg/m ² (3600 Pa)*
Maximum test load (+):	550 kg/m ² (5400 Pa)
Design load (-): wind	163 kg/m ² (1600 Pa)*
Maximum test load (-):	244 kg/m ² (2400 Pa)
Max series fuse rating:	25 A
Max reverse current:	25 A

* Safety factor 1.5

TEMPERATURE RATINGS*

Nominal Module Operating Temperature:	44.6°C ($\pm 2^\circ\text{C}$)
Temperature coefficient of P_{MPP} :	-0.36 %/°C
Temperature coefficient of V_{OC} :	-0.30 %/°C
Temperature coefficient of I_{SC} :	0.066 %/°C

*The temperature coefficients stated are linear values

MECHANICAL DATA

Dimensions:	1665 x 991 x 38 mm
Area:	1.65 m ²
Weight:	18 kg

Founded in Norway in 1996, REC is a leading vertically integrated solar energy company. Through integrated manufacturing from silicon to wafers, cells, high-quality panels and extending to solar solutions, REC provides the world with a reliable source of clean energy. REC's renowned product quality is supported by the lowest warranty claims rate in the industry. REC is a Bluestar Elkem company with headquarters in Norway and operational headquarters in Singapore. REC employs more than 2,000 people worldwide, producing 1.4 GW of solar panels annually.



www.recgroup.com