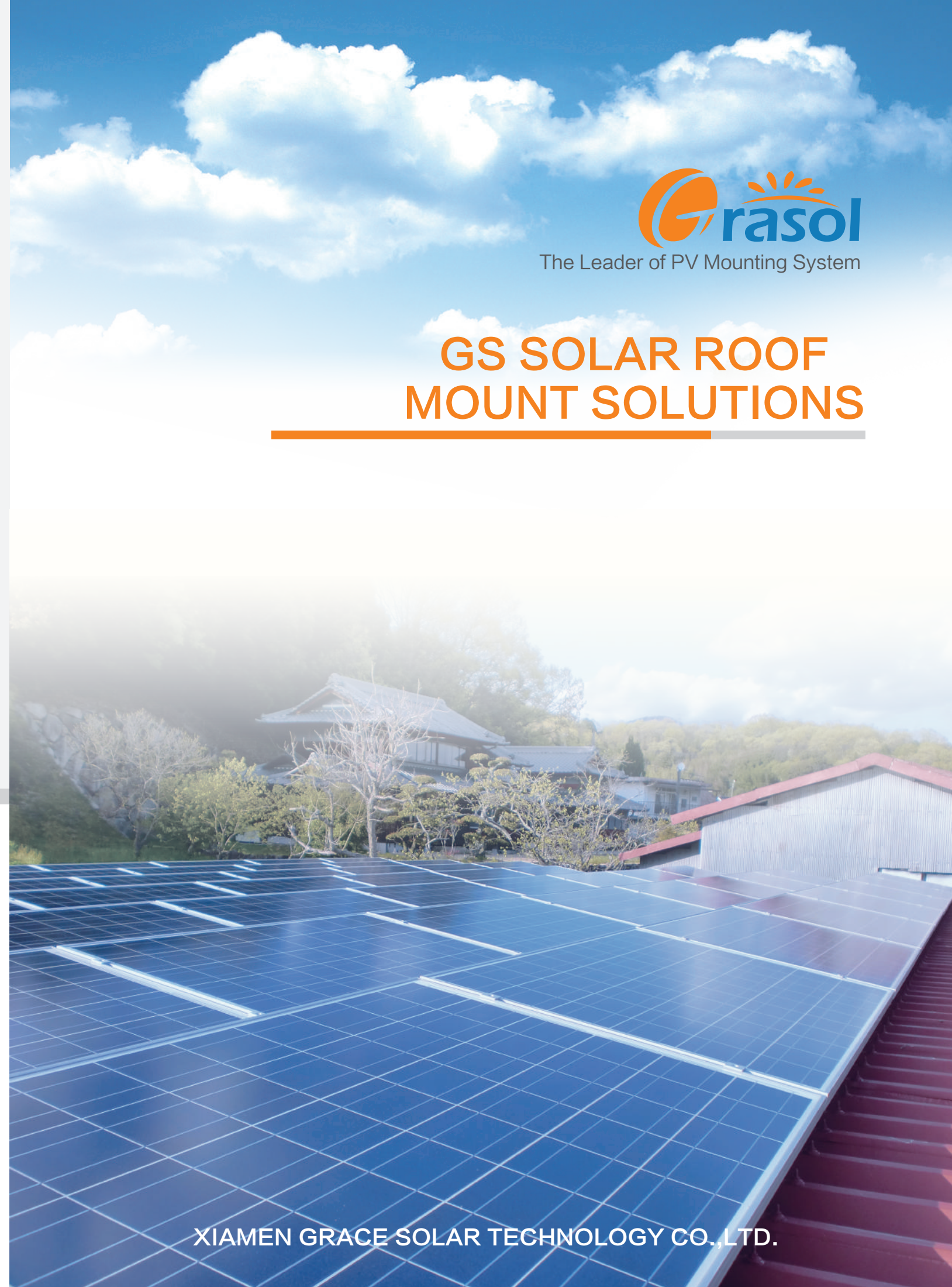




The Leader of PV Mounting System

# GS SOLAR ROOF MOUNT SOLUTIONS



**佰明集团**  
**BYMEA GROUP**  
Bymea Investment Co., Ltd.  
Bymea LED Co., Ltd.  
Bymea E Business Co., Ltd.  
Xiamen Grace Solar Technology Co., Ltd.



**XIAMEN GRACE SOLAR TECHNOLOGY CO., LTD.**  
(BYMEA Group) Building B/C Vanke Yunxi, No. 527/529 Gaolin Middle Rd,  
Huli Dist, Xiamen, China.  
T:0086-592-3671921 F:0086-592-5732132  
W:www.gracesolar.com M:info@gracesolar.com



2018/08/15 EN

XIAMEN GRACE SOLAR TECHNOLOGY CO., LTD.



## About Grace Solar

Xiamen Grace Solar Technology Co., Ltd. is a leading manufacturer of photovoltaic mounting system and a big supplier of PV products. High-tech and innovation help Grace Solar to always keep pace with the whole industry and the world market. We devote to manufacturing and marketing the steadiest, most trustable and cost-effective solar mounting system solutions to our customers and faith in the belief of "best service". As one of the largest PV solar products exporters in China, the industrial pioneer - Grace Solar has already installed its products in more than 100 countries and regions since its foundation.



### RESEARCH AND DEVELOPMENT

Grace Solar emphasizes specialty and innovation on its products and offers good guarantee and professional support to customers.

Grace Solar values talent people a lot. A professional research and development team that is led by qualified and experienced elite is set up in the birth of the company. The application of the most advanced equipments turns the company to an industrial leader of the structural design and system performance. Grace Solar cherishes its intellectual property and software copyrights of high-tech products including Ground Mounting System, Roof Mounting System etc.



### MANAGEMENT CONCEPTS

Grace Solar brought forward the standardized and internationalized management concept at the very beginning of its establishment. It positively introduces the international management systems such as APQP, FMEA, ISO9001:2008, CP Control Plan, MSA, SPC and applies them strictly in R&D, manufacturing, marketing, service etc. phases. Furthermore, Grace Solar strives to acquire international authority certification for the products and actively studies with international and domestic certification institutions such as UL, TUV, CE, CQC, SAA, AS/NZS 1170 and Golden Sun.

### SERVICE NETWORKS

Due to long term quick feedbacks for the reliable and qualified products and services, Grace Solar wins trust from system integration companies, installers and distributors worldwide. Cooperating with several strong facilitators in different areas, Grace Solar creates global service networks to offer superior and efficient services.

## OFFICE



Group Company



Overseas Marketing Department



Meeting Room

## FACTORY



Aluminum



Oxidizing



Assembly

## PACKING



Components Packing



Adjustable Tilt System Packing



End Clamps Packing



If you are looking for PV mounting system, you can surely trust us.  
The mounting system from Grace Solar enjoys **6** advantages:

## Content

- 1、** **Competence**

We serve more than 500 clients and our mounting system has already been installed around the world especially in Japan and Australia. 4GW projects implemented since 2009.


- 2、** **Wide Applicability**

Design of the mounting system is based on the international standards that can fit for all kinds of solar module types in the world.


- 3、** **Manufacture**

We apply the high strength aluminum alloy 6005-T5 to ensure the mounting system durable and in supreme quality. High capacity and fluent production line makes it possible to mass manufacture. Month capacity is up to 120MW-150MW; for project less than 5MW, the system can be shipped out within two weeks.


- 4、** **Best Value for Money**

We offer one stop business from design, manufacture to sell; this lowers the cost of our product and makes our price competitive compared with other brands in the same quality.


- 5、** **Shipment**

We are in a seaport city and can deliver the mounting system to almost any corner in the world upon request.


- 6、** **Quality Warranty**

We promise 10 years warranty.  
Duration more than 20 years.





PITCHED ROOF RACKING SYSTEM 05-16



FLAT ROOF RACKING SYSTEM 17-20



BALLASTED MOUNTING SYSTEM II 21-24

# PITCHED ROOF RACKING SYSTEM



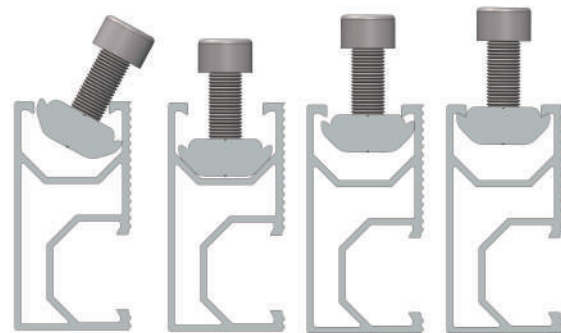
Tile Roof System



Tin Roof System

## Introduction

GS Pitched Roof Racking System designs with great flexibility for commercial and residential pitched roof. It is applicable for both framed and frameless module. GS series products adopt the innovative design of GD rail and D module which make the installation easier and quicker. High pre-assembled parts and customized solution will save your installation time and cost. Equipped with the excellent engineer team and quality management system, Grace Solar is eligible to provide perfect service. Grace Solar, your best choice.



## Benefits

### ❖ Easy Installation

D-module can be inserted into the GD rail from any position; the parts can be pre-assembled in the factory to save your time and cost on site.

### ❖ Flexibility and Compatible

GD Rail and its accessories are compatible with the most models of solar panels in different conditions.

### ❖ Safety and Reliability

Complied with the AS/NZS 1170 and other international structure load standards, the racking system, designed by the skillful engineers, can stand up to the extreme weather conditions. The main support components have also been tested to guarantee its structure performance and load-carrying capacity.

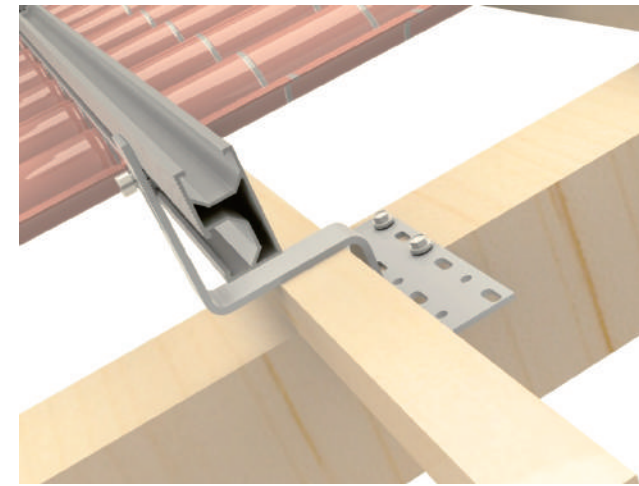
## Technical Information

Install Site	Pitched Roof
Tilt Angle	Paralled to roof ≤60°
Building Height	≤20m
Max Wind Speed	≤60m/s
Snow Load	≤1.4KN/m <sup>2</sup>
Standards	AS/NZS 1170,DIN 1055 ,Other
Material	Al6005-T5,Sus304
Color	Natural
Anti-corrosive	Anodized
Warranty	Ten Years Warranty

Note: Contact us for the project exceeding standards.

## APPLICATION

### Roman Tile Roof - (GD Rail)



#### Feature

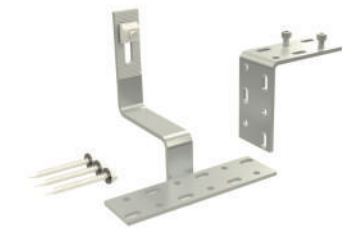
Main Material: Stainless Steel 304



GS-IK-01



GS-IK-06



GS-IK-14

Item No.	Description	Dimension (mm)			Package
		a	b	c	
GS-IK-01	Stainless Steel Hook 1# Kit	101	46	5	10pcs/Box, 4 Boxes/CTN
GS-IK-06	Stainless Steel Hook 6# Kit	101	46	5	
GS-IK-14	Stainless Steel Hook 14# Kit	101	-----	5	



Adjust the Height



GS-IK-HP



GS-IK-12

Item No.	Description	Dimension (mm)			Package
		a	b	c	
GS-IK-12	Adjustable Stainless Steel Hook 12# Kit	156~176	38~50	5	10pcs/Box, 4 Boxes/CTN
GS-IK-HP	Height Adjust Plate for Roof Hook	150	-----	5	50pcs/Box, 2Boxes/CTN II



# APPLICATION

## Flat Tile Roof Hook

**Feature**

·Main Material: Stainless Steel 304



GS-IK-02



GS-IK-02-A

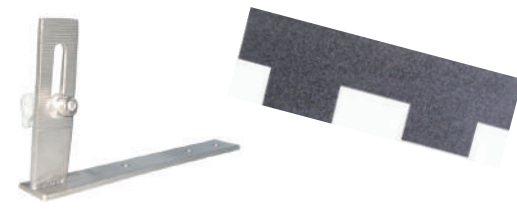


Item No.	Description	Dimension (mm)			Package
		a	b	Thickness	
GS-IK-02	Stainless Steel Hook 2#	190	30	5	30pcs/box2#, 2boxes 2#/CTN
GS-IK-02-A	Stainless Steel Hook 2# A type	190	30	5	10pcs/box2#, 2boxes 2#/CTN

## Shingle Tile Roof Hook



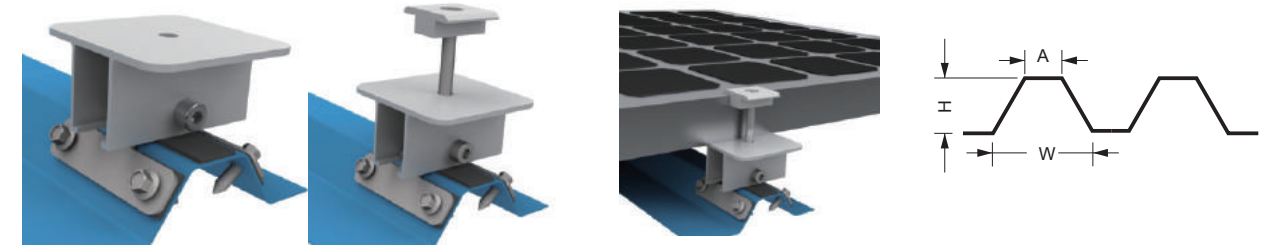
GS-IK-04



GS-IK-04-A

Item No.	Description	Dimension (mm)			Package
		Length	Width	Thickness	
GS-IK-04	Stainless Steel Hook 4#	200	30	5	20pcs/Box, 4 Boxes/CTN
GS-IK-04-A	Stainless Steel Hook 4# A type	200	30	5	10pcs/Box, 4 Boxes/CTN

## Universal Trapezoid Metal Roof (Both Sides Fixed)

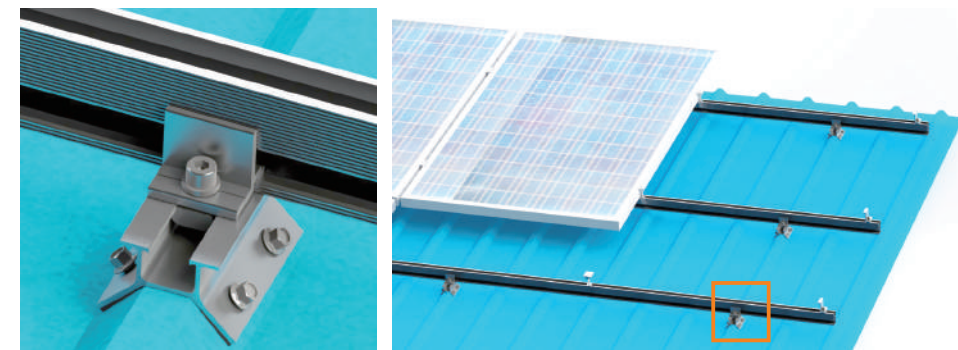


GS-UTK-01

**Technical Info**

- Material: AL6005-T5, SUS304, EPDM
- Installation: Fixed from both sides of the trapezoid roof
- This hook is applicable for most trapezoid metal roofs under A<80mm, H>25mm

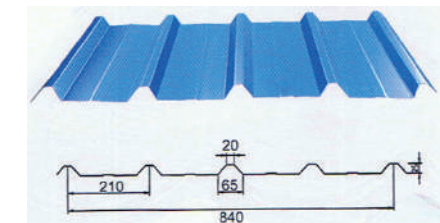
Item	Description	H	A	W	Package
GS-UTK-01	Trapezoid Metal Roof Hook 1#	>20	20~80	—	25pcs / Box, 4 Boxes / CTN



GS-IK-A07



GS-RC-D



**Technical Info**

- Material: AL 6005-T5
- Side Fixed
- Standard product is just fitted with the trapezoid roof as right figure shown

Item No.	Description	H	A	W	Package
GS-IK-A07	AL trapezoid roof hook 7#	25	20	65	30PCS/box, 4boxes/CTN
GS-RC-D	GD Rail Clamp Kit				100pcs/Box, 4 Boxes/CTN

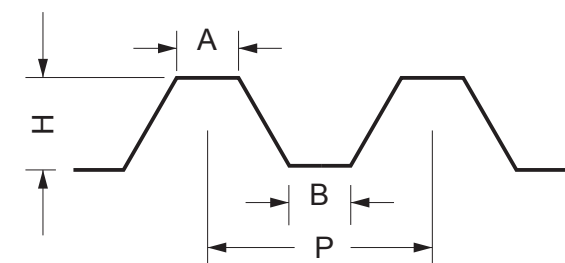
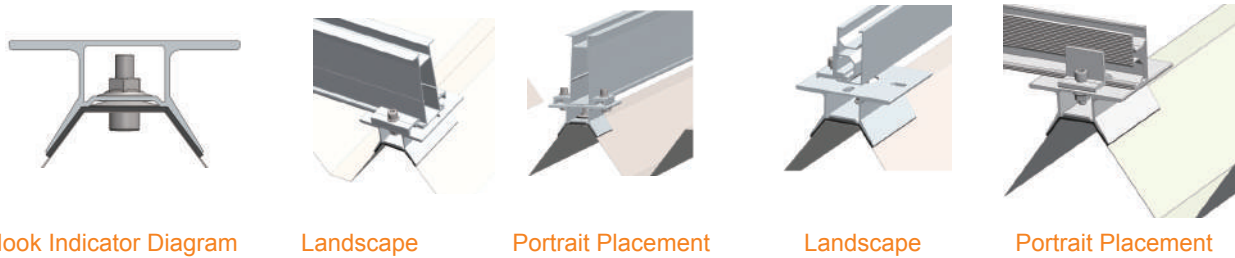




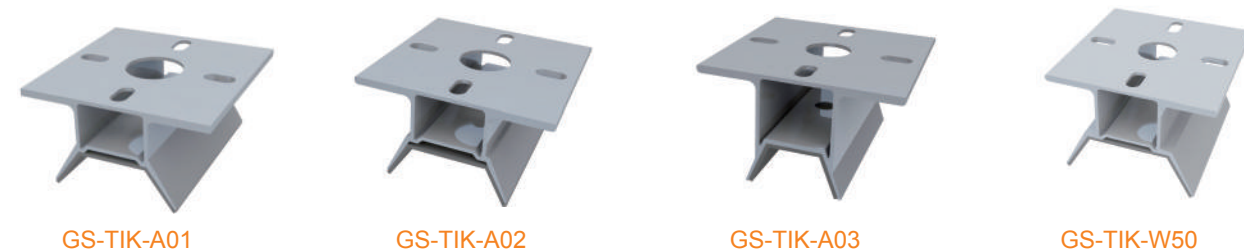
**Technical Info**

Main Material: Al6005-T5  
 Screw Material: SUS 304  
 Rubber Material: EPDM  
 Top Fixed Hook  
 You can use a roof bolt.

**Universal Trapezoid Metal Roof ( Top Fixed)**



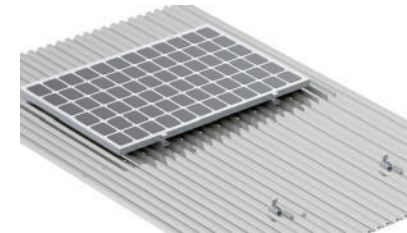
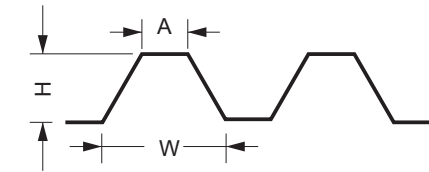
Item	Description	H	P	A	B	Package
GS-TIK-A01	88 Trapezoid Metal Roof Hook	88	200	35	35	16pcs/Box, 4 Boxes/CTN
GS-TIK-A02	40 Trapezoid Metal Roof Hook	150	250	40	40	16pcs/Box, 4 Boxes/CTN
GS-TIK-A03	25 Trapezoid Metal Roof Hook	30	300	25	250	12pcs/Box, 4 Boxes/CTN
GS-TIK-W50	50 Trapezoid Metal Roof Hook	170	300	50	50	10pcs/Box, 4 Boxes/CTN



**Technical Info**

·Material: Stainless 304 & EPDM  
 ·Installation: Fixed in top of the trapezoid roof  
 ·This hook is applicable for most trapezoid metal roofs under A>20mm, H>25mm, Thick>0.5mm

Item	Description	H	A	T
GS-UTK-B01	Trapezoid Metal Roof Hook B1#	>25	>20	>0.5



Brief Installation Steps



GS-UTK-B01



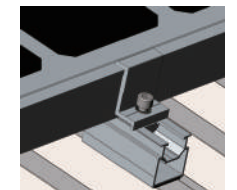
a. Drill a hole in the roof



b. Insert the bolt



c. Tighten the hook

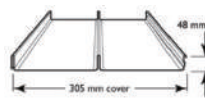


d. Install the panel

**Standing Seam Roof Hook**



GS-IK-S01-A



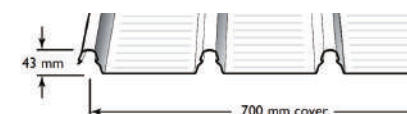
Longline 305



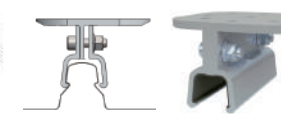
GS-IK-SK7-A



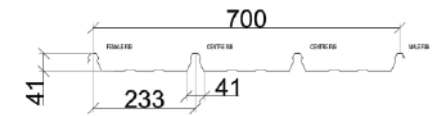
GS-IK-SK7-110



Klip-lok 700 Hi-Strength



GS-IK-S07



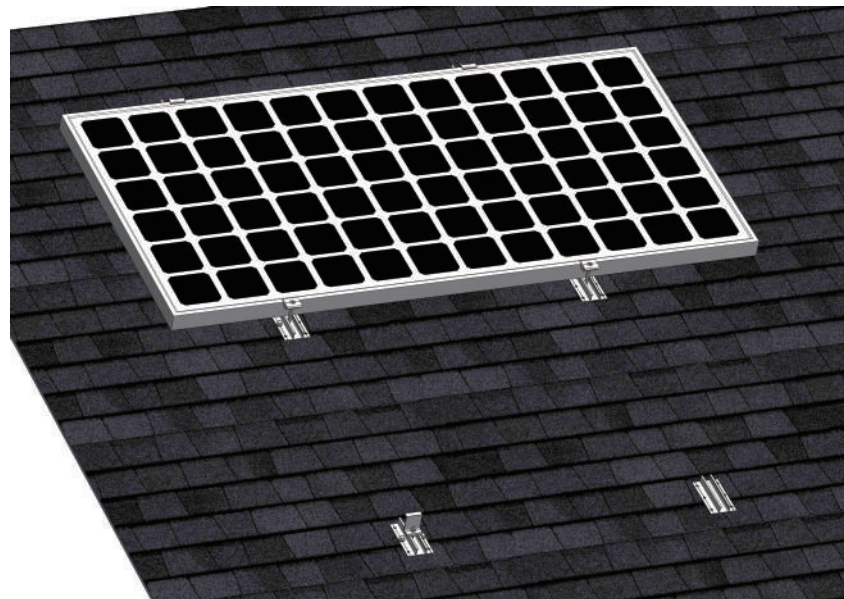
Klip-lok 700

Item No.	Description	Roof Type	Material	Package
GS-IK-S01-A	Standing Seam Roof Hook 1# A Type	Longline roof 305	SUS304	14pcs/box, 4 Boxes/CTN
GS-IK-SK7-A	Standing Seam Roof Hook K7 A Type	Klip-Lok 700	Al6005-T5	20pcs/Box, 4 Boxes/CTN
GS-IK-SK7-110	Standing Seam Roof Hook K7-110	Klip-Lok 700	Al6005-T5	10pcs/Box, 4 Boxes/CTN
GS-IK-S07	Standing Seam Roof Hook 7#	Klip-Lok 700 Hi-Strength	Al6005-T5	14pcs/Box, 4 Boxes/CTN



# APPLICATION

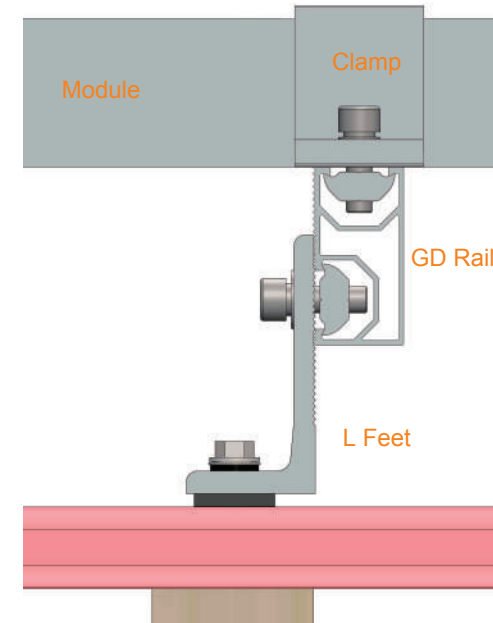
## Single Roof (Flat Rail Hook)



GS-IK-FR

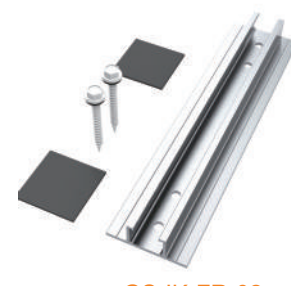
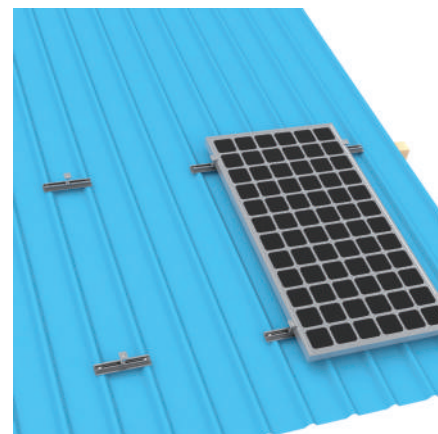
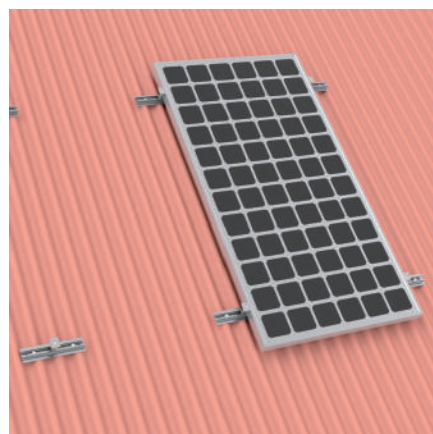
# APPLICATION

## Tin Roof Hook (L Feet)

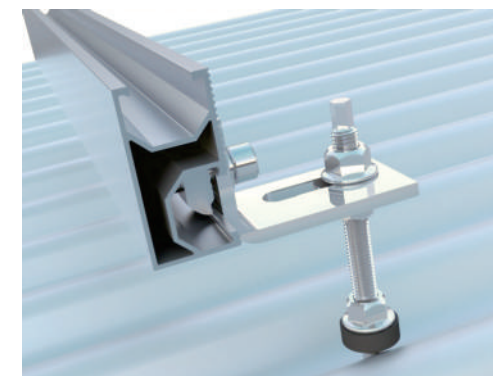


GS-IK-05

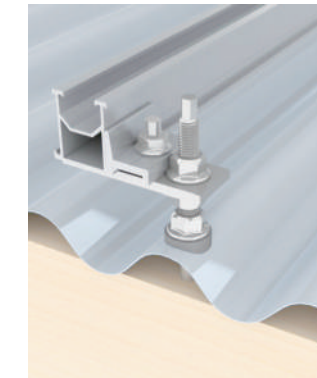
## Tin Roof (Flat Rail Hook )



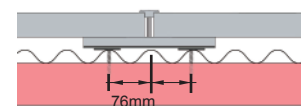
GS-IK-FR-02



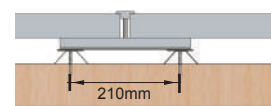
GS-IK-H01



GS-IK-H04



Corrugated Roof



Trapezoid Roof

Item No.	Description	Material	Length(mm)	Accessories	Package
GS-IK-FR	FB Rail Hook 1#	Al6005-T5	120mm	Rubber Pad& Wood screw	40pcs/Box, 4 Boxes/CTN
GS-IK-FR-02	FB Rail Hook 2#	Al6005-T5	250mm	Rubber Pad& Wood screw	25pcs/Box, 4 Boxes/CTN

### Technical Info

Hanger Bolt Material: Stainless Steel 304  
 Rail Material: Al6005-T5  
 Fit for various metal roofs with wooden structure

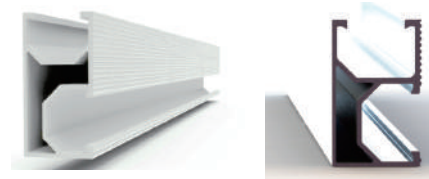
Item No.	Description	Accessories	Package
GS-IK-05	Aluminum Tin Interface Kit 5#	Wood Screw M6.3x80	50pcs/Box, 4 Boxes/CTN
GS-IK-H01	Hanger Bolt Hook 1#	Hanger bolt M10x200	20pcs/Box, 4 Boxes/CTN
GS-IK-H04	Hanger Bolt Hook 4#	Hanger bolt M10x200 & L Feet	20pcs/Box, 4 Boxes/CTN

## Rail and Splice

Feature: main material is anodized Al6005-T5; bolts are stainless steel A2-70.

Item	Description	Package
GS-DR-Length	GD Rail 1# - with top and side channels - for spanning over 1.2m	8pcs/bundle, 512pcs/pallet
GS-10R-Length	GD Rail 10# - with top and side channels - for spanning over 1.2m	8pcs/bundle, 512pcs/pallet

Note: the standard length is 2560mm, 3405mm, 4200mm. Other lengths need to be customized.



GS-DR-Length

GS-10R-Length

GS-HR-Length	GD Rail 2# - with top and side channels	8pcs/bundle, 384pcs/pallet
GS-DR4-Length	GD Rail 4# - with top and side channels - for spanning over 1.2m	8pcs/bundle, 340pcs/pallet



GS-HR-Length

GS-DR4-Length



Splice for GD #1

GS-DR-SP	GD Splice 1#	50pcs/Box, 4 Boxes/CTN
GS-DR4-SP	GD Splice 4#	50pcs/Box, 4 Boxes/CTN



GS-DR-SP

GS-DR4-SP

GS-RC-D	GR Clamp 1#	100pcs/Box, 4 Boxes/CTN
---------	-------------	-------------------------



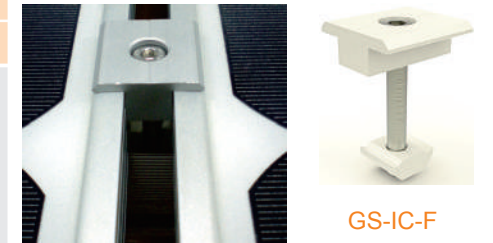
GS-DR Rail 1#  
Cross Connection

GS-RC-D

## Framed Module Clamp

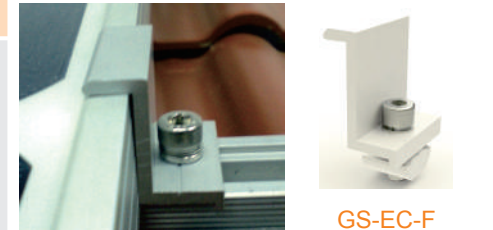
Feature: Material is Anodized Al6005-T5, Fasten is A2-70

Item No.	Description	Package
<b>Inter Clamp Kit</b>		
GS-IC-F30	GS Inter Clamp Kit 30-32mm	100pcs/Box, 4 Boxes/CTN
GS-IC-F35	GS Inter Clamp Kit 35mm	
GS-IC-F40	GS Inter Clamp Kit 40mm	
GS-IC-F46	GS Inter Clamp Kit 46mm	
GS-IC-F50	GS Inter Clamp Kit 50mm	



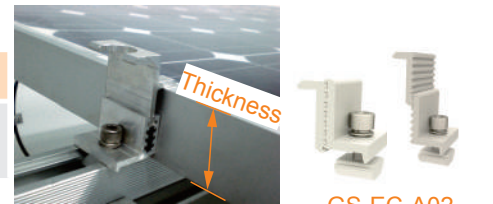
GS-IC-F

<b>End Clamp Kit</b>		
GS-EC-F32	GS End Clamp Kit 30-32mm	100pcs/Box, 4 Boxes/CTN
GS-EC-F35	GS End Clamp Kit 35mm	
GS-EC-F40	GS End Clamp Kit 40mm	
GS-EC-F46	GS End Clamp Kit 46mm	
GS-EC-F50	GS End Clamp Kit 50mm	



GS-EC-F

<b>Adjustable End Clamp Kit</b>		
GS-EC-A02	GS AD End Clamp Kit 2# -thickness:30~58mm	50pcs/Box, 4 Boxes/CTN



GS-EC-A02

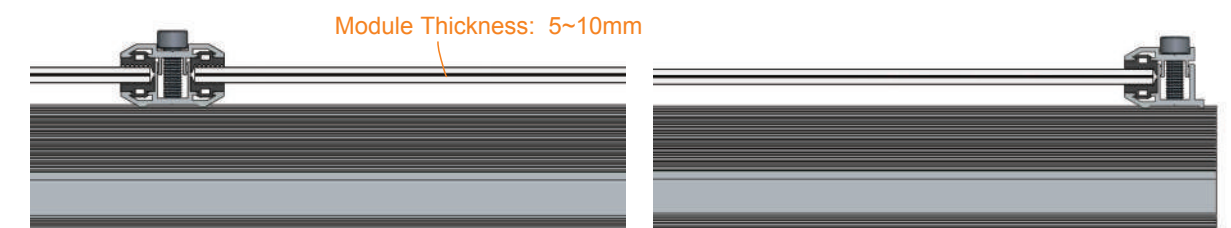
## Frameless Module Clamp

Item No.	Description	Package
GS-IC-L80	TF Module Inter Clamp	40pcs/Box, 4 Boxes/CTN
GS-EC-L80	TF Module End Clamp	50pcs/Box, 4 Boxes/CTN



GS-IC-L80

GS-EC-L80



Approved by First Solar Inc. and Canadian Solar Inc.



# COMPONENTS

## Accessories

Item No.	Description	Material	Package
GS-A-IC	Framed Module Inter Clamp	Anodized Al6005-T5	200pcs/Box 4 Boxes/CTN
GS-A-EC32	Framed Module End Clamp 32		
GS-A-EC35	Framed Module End Clamp 35		
GS-A-EC40	Framed Module End Clamp 40		
GS-A-EC46	Framed Module End Clamp 46		
GS-A-EC50	Framed Module End Clamp 50		
GS-A-DM	D-Module - width 20mm, M8 threaded hole		

GS-A-PC01	Plastic Cable Clip 1#	Nylon	1000pcs/Box 4 Boxes/CTN
GS-A-DRC-SG	GD Rail Cap (Silver Gray)		250pcs/Box 4 Boxes/CTN



GS-SSCC-03	SS Cable Clip 3#	SUS304	500pcs/Box 4Boxes/CTN
GS-SSCC-05	SS Cable Clip 5#	SUS301	1000pcs/Box
GS-CT-01	Cable Tie1# 4.6x300	SUS304	2000pcs/Box 2# 2 Boxes 2#/CTN
GS-DC-01	DC Isolater Bracket	Al6005-T5 A2-70	14pcs/Box 2 Boxes/CTN



# COMPONENTS

## Fastener

### ❖ Socket Head Screw — Stainless Steel A2-70

GS-F-S_	Socket Head Screw	M8x20/25/28 30/35/40/45/65	Package on Request
---------	-------------------	-------------------------------	--------------------



### ❖ Anti-theft Screw — Stainless Steel A2-70

GS-F-AS_	Anti-theft Screw	M8x20/25/28 30/35/40/45/65	Package on Request
----------	------------------	-------------------------------	--------------------



### ❖ Hexagon Nut — Stainless Steel A2-70

GS-F-N108	Hexagon Nut M8	Package on Request
GS-F-N208	Flange Nut with Locking M8	
GS-F-N210	Flange Nut with Locking M10	
GS-F-N212	Flange Nut with Locking M12	



### ❖ Spring Washer — Stainless Steel A2-70

GS-F-W108	Spring Washer M8	Package on Request
GS-F-W208	Lock Wahser M8, OD13	
GS-F-W308	Lock Wahser M8, OD18	



### ❖ Self-tapping Screw — Stainless Steel 410

GS-F-T625	Self-tapping Screw St.6.3*25	Package on Request
-----------	------------------------------	--------------------



### ❖ Wood Screw — Stainless Steel 410

GS-FS-W660	Wood Screw, St.6.3*60 with Washer	Package on Request
GS-FS-W680	Wood Screw, St.6.3*80 with Washer	



### ❖ Hanger Bolt — Stainless Steel A2-70

GS-F-H020	Hanger Bolt M10*200	Package on Request
-----------	---------------------	--------------------



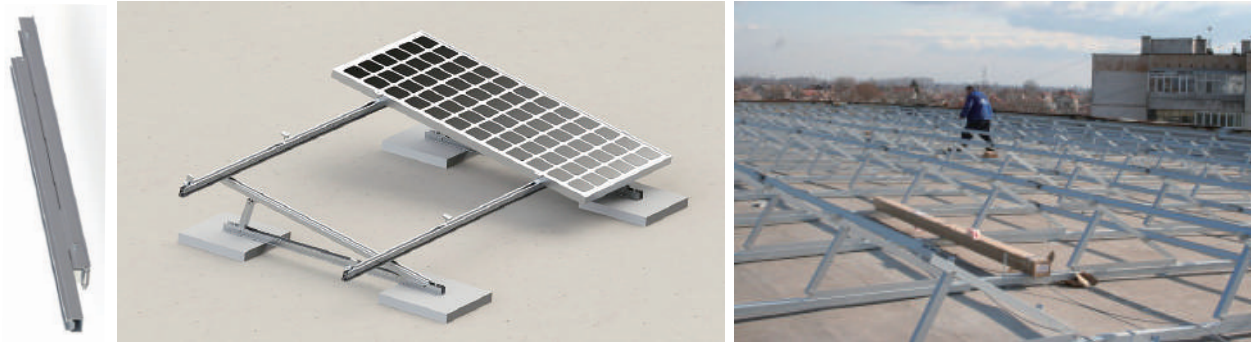
### ❖ Accessories

GS-FA-H020	Hanger Bolt Assembly M10*200	50pcs / Box 4 Boxes / CTN
------------	------------------------------	------------------------------





# FLAT ROOF RACKING SYSTEM



## Introduction

GS Flat Roof Racking System is developed to mount the module tilting a certain angle on a flat roof or ground. Solutions include fixed angle and adjustable angle from 10° – 60° . GS series products contain the innovated aluminum rail, D-module, clamps and legs which can be pre-assembled to make the installation easy and quick, so as to save your time and labor cost. The customized rail can exempt you from onsite weld and cut. It is in high strength, anti-corrosive and of aesthetics in appearance.

## Benefits

### ❖ Easy Installation

D-module can be inserted into the GD rail from any position; the parts can be pre-assembled in the factory to save your time and cost on site.

### ❖ Flexibility and Compatibility

GD Rail and its accessories are compatible with the most models of solar panels in different conditions.

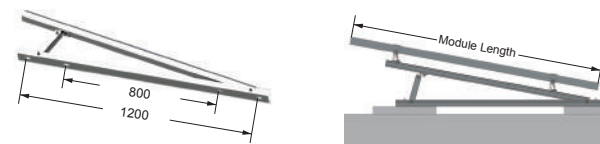
### ❖ Safety and Reliability

Complied with the AS/NZS 1170 and other international structure load standards, the racking system, designed by the skillful engineers, can withstand the extreme weather conditions. The main support components have also been tested to guarantee its structure performance and load-carrying capacity.

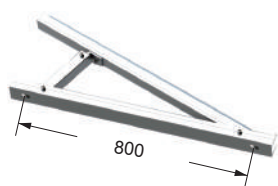
## Technical Information

Install Site	Low profile roof or open field
Tilt Angle	10deg ~ 60deg
Building Height	up to 20m
Max Wind Speed	up to 60m/s
Snow Load	up to 1.4KN/m <sup>2</sup>
Standards	AS/NZS 1170&DIN 1055&Other
Material	Aluminum alloy & StainlessSteel
Color	Natural
Anti-corrosive	Anodized
Warranty	Ten years warranty
Duration	More than 20 years

## NT Triangle Bracket - Fixed Angle



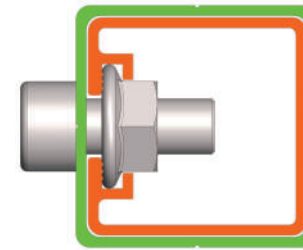
**GS-NT01-XX**  
-For module length less than 1700mm



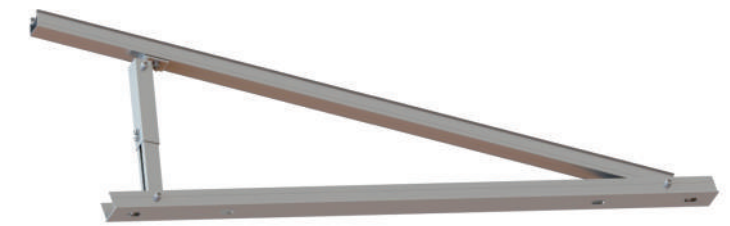
**GS-NT02-XX**  
-For module length less than 1000mm

**Feature**  
·Main Material: Anodized Al6005-T5  
·Fasten Material: SUS A2-40  
·Fixed Angle from 5~60deg

## NT Triangle Bracket - Adjustable Angle



Telescope Solution



**GS-NT01-10/20**  
-For module length less than 1700mm  
-Angle is adjustable from 10 to 20deg

**GS-NT01-20/40**  
-For module length less than 1700mm  
-Angle is adjustable from 20 to 40deg

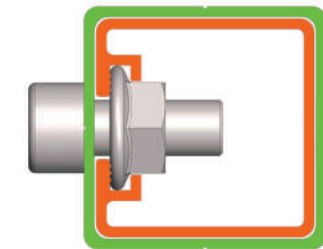
Item No.	Description	Spec.
GS-NT01-10	NT Tri-angle Bracket 01, 10deg	10deg
GS-NT02-10	NT Tri-angle Bracket 02, 10deg	10deg
GS-NT01-10/20	AD NT Tri-angle Bracket 01, 10-20deg	10-20deg
GS-NT01-20/40	AD NT Tri-angle Bracket 01, 20-40deg	20-40deg

GS-RC-D GD Rail Clamp



**GS-RC-D**  
-Clamp the GD Rail on the NT Tri-angle Bracket

## Adjustable Tilt System



Telescope Solution

## Legs

### Feature

- Main Material: Anodized Al6005-T5
- Fasten Material: SUS A2-40
- Wood Screw: 2pcs M6x80
- Patent Telescope solution can adjust the angle
- Anti-Slip and Anti-out design



GS-AD-FL



GS-AD-RL

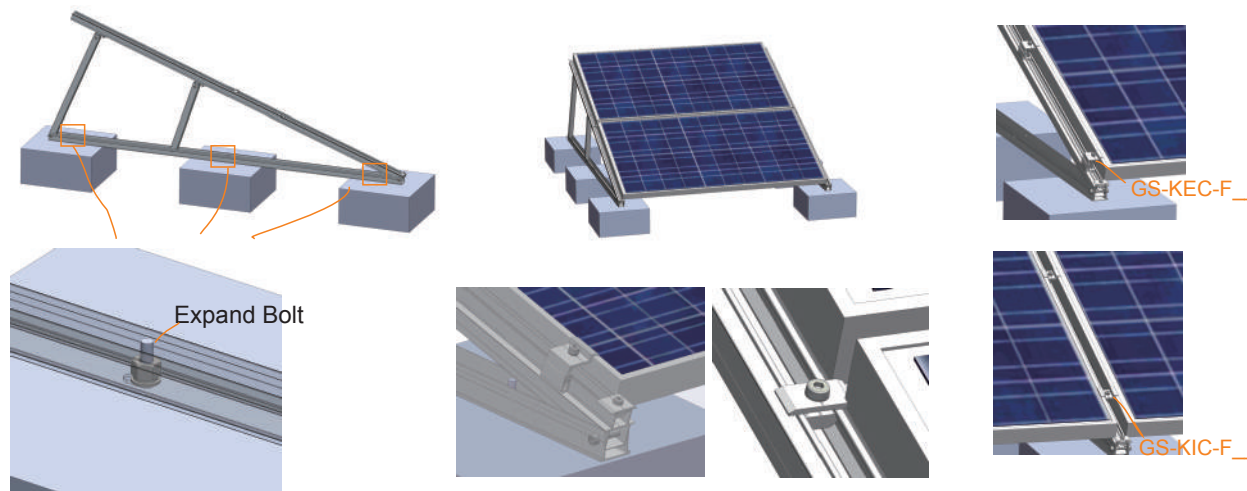
Item No.	Description	Leg Length	Package
GS-AD-FL	AD Front Leg	-----	20pcs/BOX, 4Boxes/CTN
GS-AD-RL10/15	AD Rear Leg 10/15 deg	240~360mm	30pcs/CTN
GS-AD-RL15/30	AD Rear Leg 15/30 deg	340~680mm	25pcs/CTN
GS-AD-RL30/60	AD Rear Leg 30/60 deg	700~1200mm	25pcs/CTN III



### KNT Triangle Bracket



### Brief Installation Steps



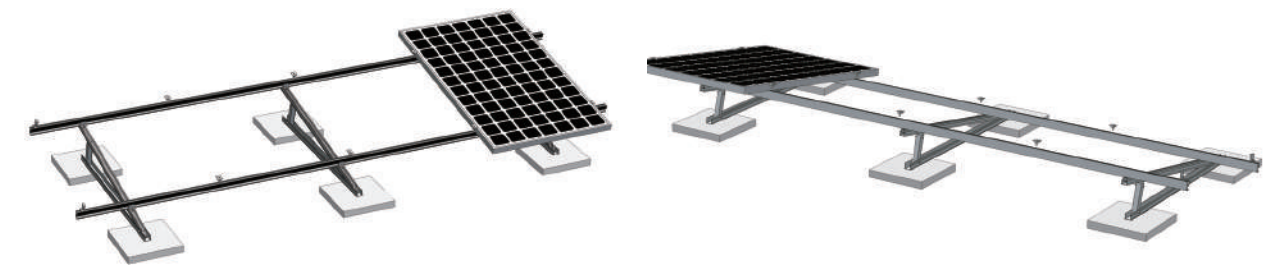
a. Fix the bottom base to the concrete foundation

b. Place the panel

c. Fasten the panel

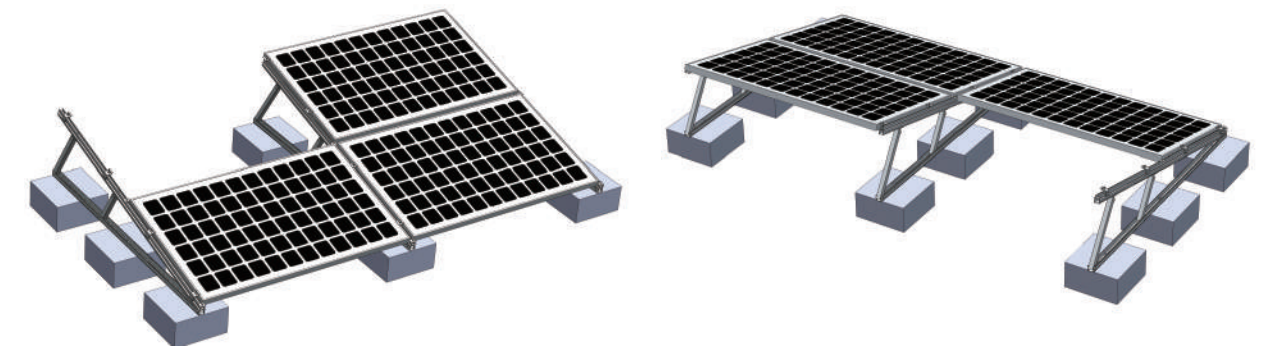
Item No.	Description	Placement	Angle
GS-KNT2000-10	KNT Bracket 2000-10deg	2x2, landscape	Fixed 10deg

### NT Triangle Bracket



Solar Panel Size: 1650x992x40mm	Rail GS-DR-4200	Bracket GS-NT01-10	Rail Clamp GS-RC-D	Inter Clamp GS-IC-F40	End Clamp GS-EC-F40
Angle:10deg Array: 1x4	2 pcs	3 pcs	6 pcs	6 pcs	4 pcs

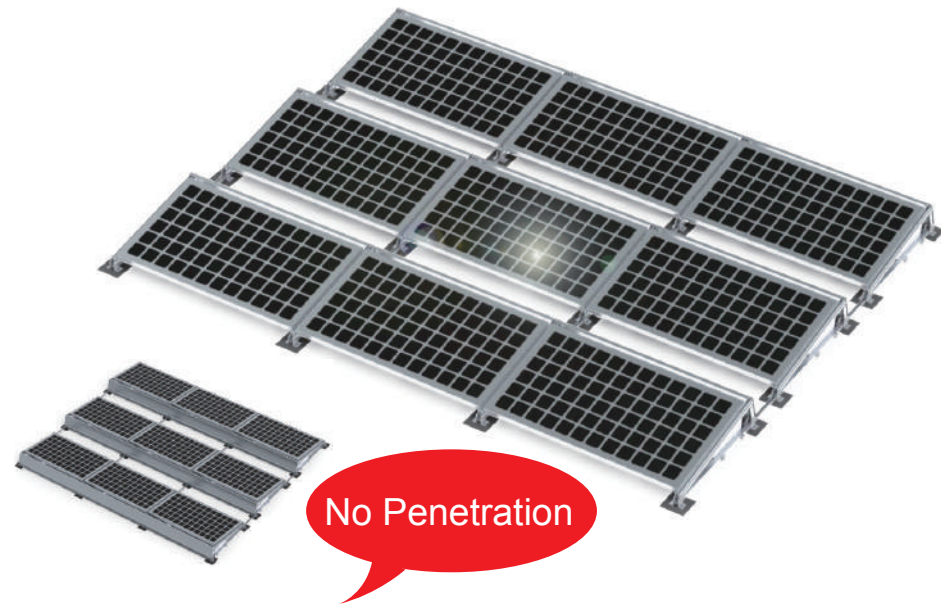
### KNT Triangle Bracket



Solar Panel Size: 1650x992x40mm	Bracket GS-KNT2000-10	Inter Clamp GS-KIC-F35/40	End Clamp GS-KEC-F40
Angle:10deg Array: 2x2	3 pcs	4 pcs	8 pcs



# BALLASTED MOUNTING SYSTEM II



## Benefits

### ❖ Easy Installation

Non-rail design; pre-assemble in the factory.

### ❖ Flexibility and Compatibility

Applicable for majority framed panels in various flat roofs.

### ❖ Standard

JISC8955 2011 standard

ISO9001 quality management certification

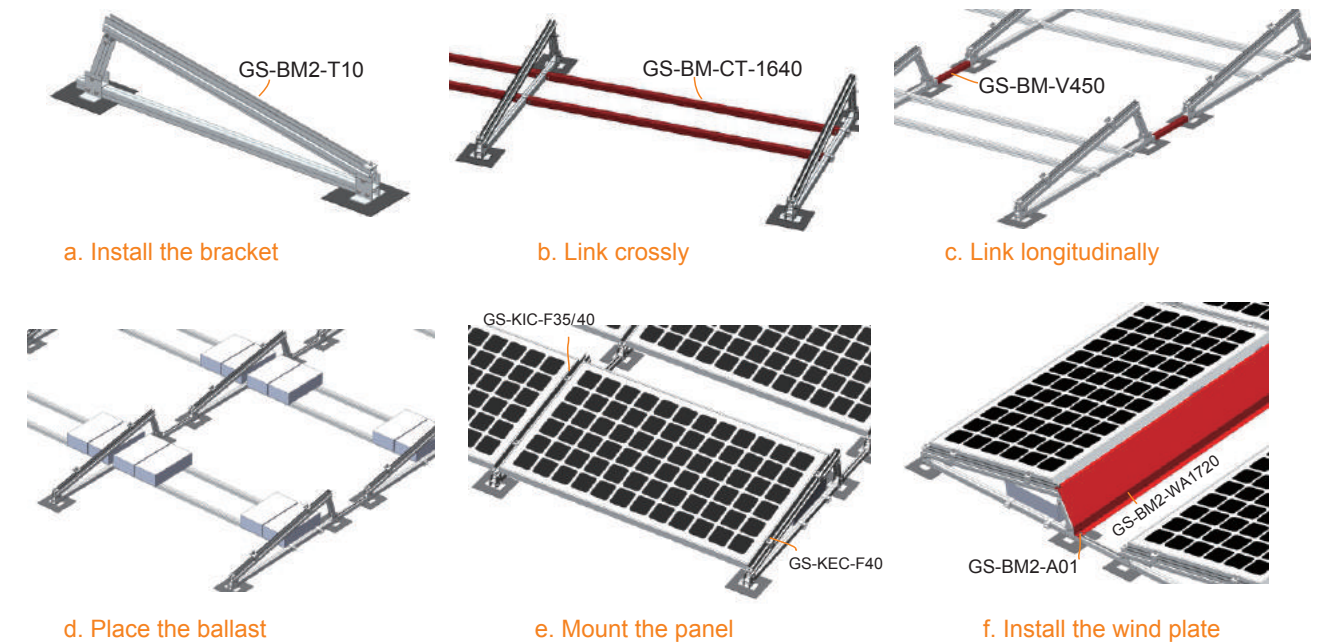
## Technical Information

Install Site	Low profile roof or open field
Tilt Angle	10deg, 15deg, 20deg
Building Height	up to 20m
Max Wind Speed	up to 60m/s
Snow Load	up to 1.4KN/m <sup>2</sup>
Standards	AS/NZS 1170 & DIN 1055 & Other
Material	Aluminum alloy & Stainless Steel
Color	Natural
Anti-corrosive	Anodized
Warranty	Ten years warranty
Duration	More than 20 years



# COMPONENTS

## System Overview



## Project Example

Module Size	1650*992*46mm	Install Site	Flat Roof
Angle	10deg	Design Wind Speed	60m/s
Array	2*2 (4 pcs)		

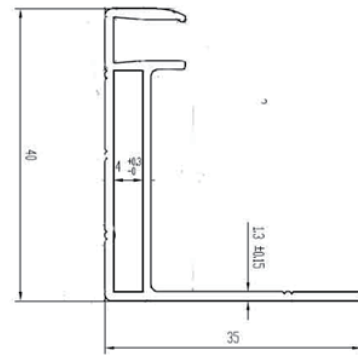
Item No.	Description	Qty	Material
GS-BM2-T10	BM2 Bracket, 10deg	12pcs	Al6005-T5
GS-KIC-F35/40	Inter Clamp 35~40	12pcs	Al6005-T5
GS-KEC-F40	End Clamp 40	12pcs	Al6005-T5
GS-BM-CT-1638	Cross-Link tube, 1638	18pcs	Al6005-T5
GS-BM2-V450	Vertical-Link tube, 450	8pcs	Al6005-T5
GS-BM2-WA1750	Wind Plate, 1750mm	9pcs	Q235
GS-BM2-A01	Accessories	12pcs	SUS A2-70

Package: on request



# Grace Solar AL Frame

Material: AL6063-T5  
Surface: Anodized (AA15 Grade)



GSF-TY40  
AL Frame TY System – 40mm Height

## Introduction

Being devoted to Aluminum products for over seven years, Xiamen Grace Solar Technology Co., Ltd. has accepted widely recognition among clients, with capacity of superior processing and good guarantee. Grace Solar manufacturers and offers various kinds of Aluminum frames, and can customize basing on different demands. Grace Solar, your best choice!

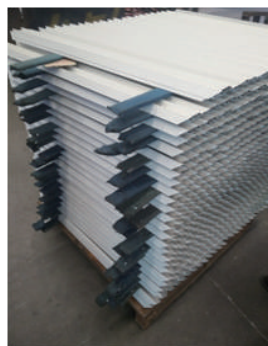
## Processing Overview



Cutting



Punching



Semi-products



Packaging

# Roof Mounting Project Image



Adjustable Tilt System



Triangle Bracket



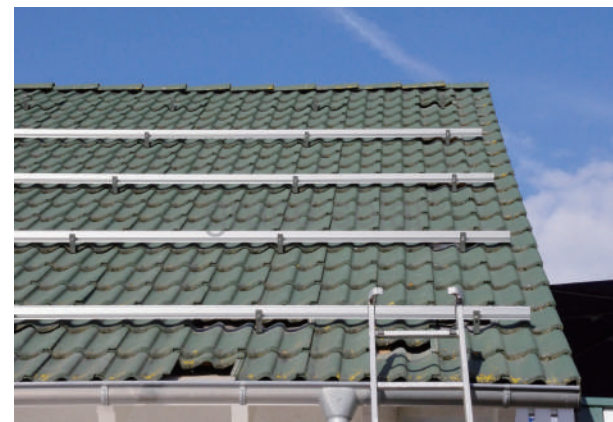
# Roof Mounting Project Image



Universal Trapezoid Metal Roof Hook (Top Fixed)



Tin Roof Hook (L Feet)

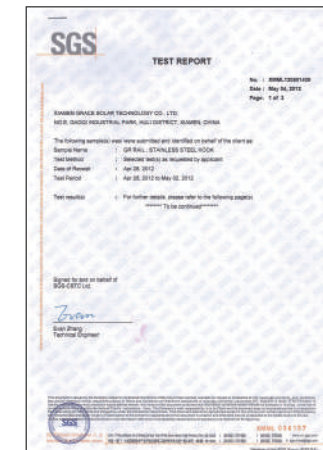


Tile Roof Hook

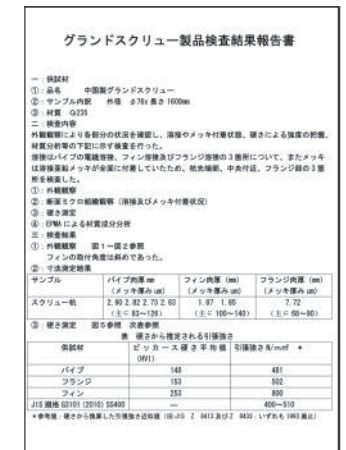
# Approval and Certificate



SGS Aluminum Alloy Quality Report



SGS Salt Spray Test Report



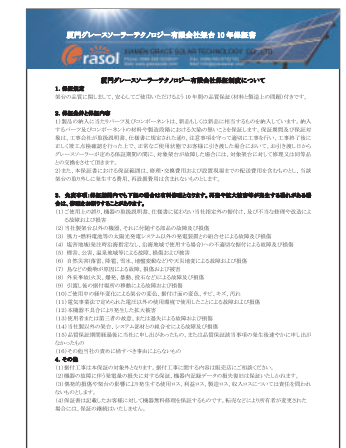
Screw Product Inspection Result Report



Japan Utility Model Registration Certificate



ISO9001:2008



Quality Warranty



TUV Certificate



UK MCS Certificate



Australia AS1170.2 Certificate